

# 2019 BENCHMARKING REPORT

## Summary of the findings

**For the period 1 January 2019 to 31 December 2019, plus five-year trends.**

This report summarises information from the Forum's Benchmarking project.

Participants in the project have online access to additional information, including sector results.

If you would like to join the project and gain access to the full benchmarking results please email:  
**[benchmarking@forum.org.nz](mailto:benchmarking@forum.org.nz)**

## KEY RESULTS FOR 2019

(For all workers – employees & contractors)

**5.35** Total Recordable Injury Frequency Rate

**17.27** All Injury Frequency Rate

**49.59** Near Miss Report Frequency Rate

**3** Workers died

## Summary

This report provides a summary of health and safety performance for Business Leaders' Health and Safety Forum members participating in the benchmarking initiative. This initiative helps members understand and compare their performance, and helps track progress towards the Forum's goals.

The results show an overall 2019 Total Recordable Injury Frequency Rate of 5.35 (for all participants and all workers - employees and contractors). This was a 69% increase on the 2018 result. The All Injuries rate of 17.27 was up 50% on 2018. The Near Miss Report rate of 49.59 was up 70%. Three workers were recorded as losing their lives while working for participants.

In 2019, 75 members took part in benchmarking, compared with 77 in 2018. The hours worked (sample size) was 125.8 million hours worked for employees and 35.9 million hours worked for contractors.

This initiative uses OSHA definitions for injuries, and all frequency rates are based on 200,000 hours worked.

## Reported injury frequency rates

### All workers – employees and contractors combined

	2019	2018	2017	2016	2015
<b>Total Recordable Injuries</b>	<b>5.35</b>	<b>3.17</b>	<b>2.96</b>	<b>2.84</b>	<b>3.56</b>
Near Miss Reports	49.59	29.02	18.50	20.45	29.95
First Aid Injuries	11.92	8.32	6.98	10.65	6.03
Medical Treatment Injuries	1.77	1.54	1.20	1.25	1.88
Occupational Illness	0.01	0.02	0.04	0.03	0.03
Restricted Work Injuries (RWI)	1.35	0.33	0.38	0.20	0.22
Lost Time Injuries (LTI)	2.22	1.29	1.38	1.39	1.45
All Injuries	17.27	11.49	9.94	13.49	9.59
Days Lost (LTI)	29.44	15.72	10.00	12.05	16.20
Days Lost (RWI)	17.92	3.73	2.39	1.49	1.09

12 month rolling average

### Employees and contractors separately

	Employees 2019	Contractors 2019
<b>Total Recordable Injuries</b>	<b>6.06</b>	<b>2.07</b>
Near Miss Report	56.72	19.72
First Aid Injuries	13.76	4.51
Medical Treatment Injuries	2.01	0.81
Occupational Illness	0.02	0.01
Restricted Work Injuries (RWI)	1.55	0.32
Lost Time Injuries (LTI)	2.50	0.93
All Injuries	19.82	6.58
Days Lost (LTI)	34.59	6.97
Days Lost (RWI)	21.54	0.56

12 month rolling average

## Who's involved

**Agriculture, Forestry, Fishing:** Aratu Forests Ltd, Ernslaw One – Forestry, Miraka, OSPRI New Zealand, Pāmu, PF Olsen, Ravensdown.

**Construction:** Cassidy Construction, Citycare – Construction, Contech BBR, ECL Group, Fulton Hogan, McConnell Dowell Constructors, Naylor Love Construction, Optima, PAE (Construction), Taylors Contracting Co.

**Defence, Public Order, Safety:** The Department of Corrections.

**Education and Training, Health Care and Social Assistance, Arts and Recreation:** Summerset Group.

**Information Media and Communications, Finance and Insurance, Property Services, Business Services, Business Support Services, Public Administration:** Accident Compensation Corporation, Agresearch, Christchurch City Council, GNS Science, Kainga Ora, , PAE NZ (BSS), The NZ Institute for Plant and Food Research, Tonkin Taylor.

**Manufacturing:** Babcock NZ, Barkers, Bridgestone, Dominion Salt, Fonterra, Freshpork (RM), Methanex New Zealand, Silver Fern Farms, Tenon.

**Mining, Utilities, Waste Management:** Chorus New Zealand, Citycare – Utilities & Waste, Contact Energy, Counties Power, DELTA Utility Services, Genesis Energy, Guaranteed Flow Systems, Meridian Energy, Northpower, OMV NZ, Powerco, WEL Networks, Wellington Water, Watercare Services.

**Other Services:** AECOM, BECA, Citycare – Parks Maintenance, OCS Cannon Hygiene, OPUS, Recreational Serices, Worley Parsons.

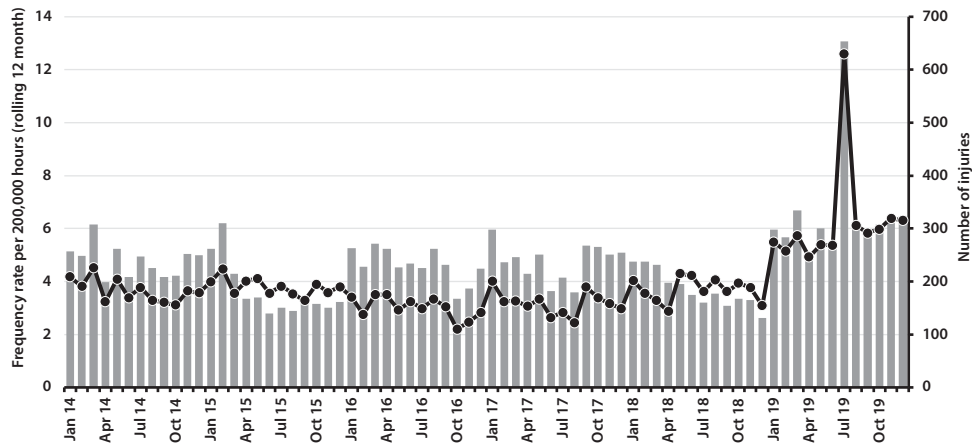
**Retail Trade, Accommodation, Food Services:** AssureQuality, Comvita, Restaurant Brands, Z Energy.

**Wholesale Trade, Transport, Postal, Warehousing:** 1st Maintenance, Airways New Zealand, Auckland International Airport, BP Oil NZ, Centreport, CHEP New Zealand, Christchurch International Airport, Cold Storage Nelson, Eastland Group, Liquigas, Port Nelson, Port of Napier, Port of Otago, Ports of Auckland, Red Bus, Southport, Wellington Airport.

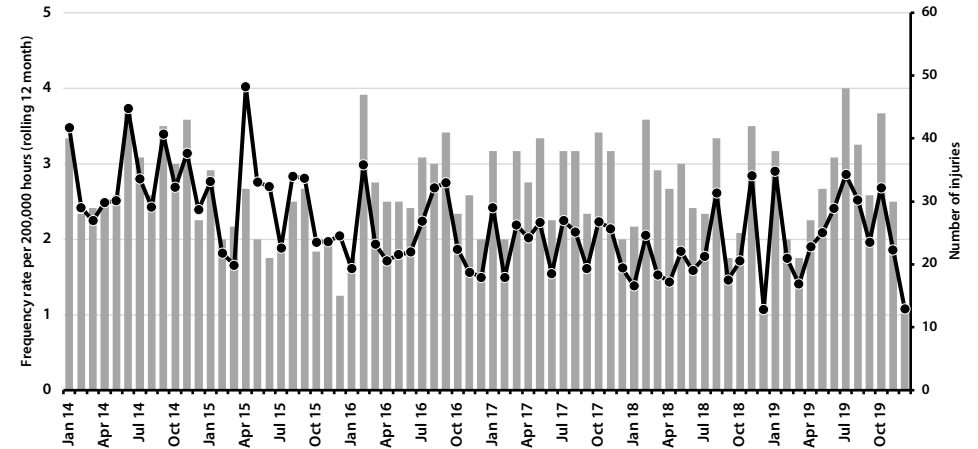
*\*Some members operate in more than one sector and entered data in more than one sector category to reflect the activities of different business units. As a result, those members are counted more than once in the table above.*

## Key 5-year trends

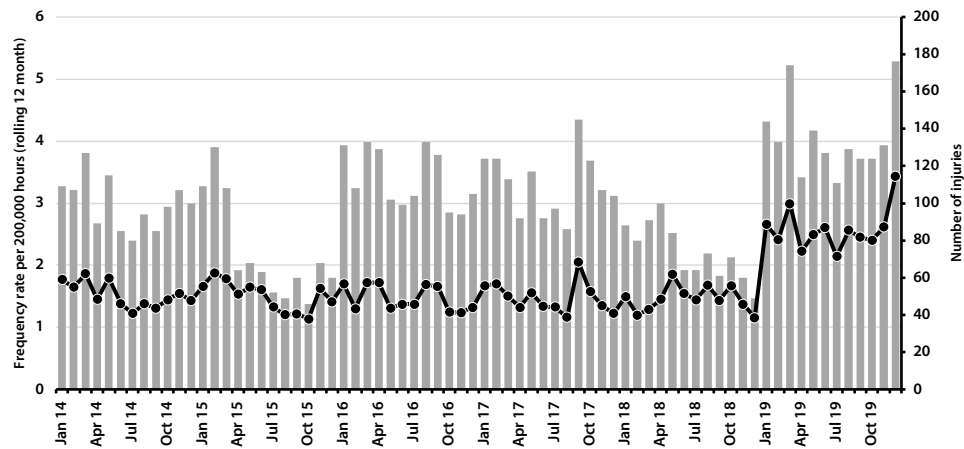
Total recordable injuries – Employees



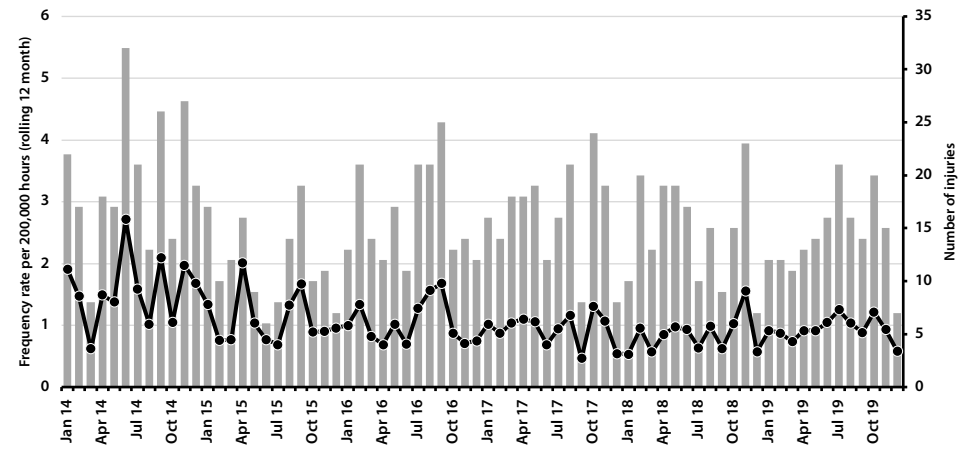
Total recordable injuries – Contractors



Lost time injuries – Employees



Lost time injuries – Contractors



■ Number of injuries ● Frequency rate

Note the number of cases (grey bars) may increase while the frequency rate reduces, as the rate will depend on the number of hours worked over the rolling 12 month period.

# ABOUT THIS REPORT

## About the data

This report may not necessarily reflect the level of risk of serious or fatal harm within participating businesses.

The data in this report may be subject to errors relating to the way it is collected, classified and reported by member organisations and with collation of results. In particular, data quality is impacted due to the fact that some Forum members do not populate all measures or apply the OSHA definitions for reporting injury outcomes.

The Forum adopted a common injury reporting standard (OSHA) and injury classification standard (based on ANZSIC level 1) in December 2011 to improve the quality and reliability of benchmarking data.

## Definitions

- **Restricted work injury:** Where an injury prevents a return to work on normal duties for 1 day/shift or more
- **Lost time injury:** Where an injury prevents a return to work for 1 day/shift or more
- **Medical treatment injury:** Any significant work-related injury or illness diagnosed by a physician or other licensed health care professional. Includes managing and caring for a patient to combat a disease or disorder
- **Total recordable injury:** Total medical treatment injuries, restricted work injuries, lost time injuries and fatal injuries
- **First aid injury:** An injury requiring minor treatment
- **All injuries:** Total recordable injuries plus first aid injuries
- Frequency rates based on 200,000 hours worked



## About the Business Leaders Health and Safety Forum

The Business Leaders' Health and Safety Forum inspires and supports its members to become more effective leaders on health and safety. The Forum has over 360 members, who are CEOs or Managing Directors of significant New Zealand companies, or companies operating in high risk environments.

## Contact us

Email: [benchmarking@forum.org.nz](mailto:benchmarking@forum.org.nz) or find out more at: [www.zeroharm.org.nz](http://www.zeroharm.org.nz)