

2020 BENCHMARKING REPORT

Summary of the findings

For the period 1 January 2020 to 31 December 2020, plus five-year trends.

This report summarises information in the Forum's full Benchmarking Report.

The full online report includes detailed sector results.

It is available to all participants who contribute their data to the benchmarking project.

If you would like to join the project and have access to the full report please email: benchmarking@forum.org.nz

KEY RESULTS FOR 2020

(For all workers – employees & contractors)

4.66 Total Recordable Injury Frequency Rate

14.03 All Injury Frequency Rate

34.47 Near Miss Report Frequency Rate

3 Workers Died

Key results

This report provides a summary of health and safety performance for Business Leaders' Health and Safety Forum members participating in the benchmarking initiative. This initiative helps members understand and compare their performance, and helps track progress towards the Forum's goals.

The results show an overall 2020 Total Recordable Injury Frequency Rate of 4.66 (for all participants and all workers – employees and contractors). This was a 12.4% decrease on the 2019 result.

In 2020, 74 members took part in benchmarking, compared with 75 in 2019. The hours worked (sample size) was 163 million hours worked for employees and 44 million hours worked for contractors.

This initiative uses OSHA definitions for injuries, and all frequency rates are based on 200,000 hours worked.

Reported frequency rates

All workers – employees and contractors combined

	2020	2019	2018	2017	2016
Total Recordable Injuries	4.66	5.35	3.17	2.96	2.84
First Aid Injuries	9.37	11.92	8.32	6.98	10.65
Medical Treatment Injuries	2.13	1.77	1.54	1.20	1.25
Restricted Work Injury	0.6	1.35	0.33	0.38	0.20
Days Lost (RWI)	23.86	17.92	3.73	2.39	1.49
Lost Time Injuries	1.95	2.22	1.29	1.38	1.39
Days Lost (LTI)	39.27	29.44	15.72	10.00	12.05
All Injuries	14.03	17.27	11.49	9.94	13.49
Occupational Illness	0.02	0.01	0.02	0.04	0.03
Near Miss Reports	34.47	49.59	29.02	18.50	20.45

12 month rolling average

Who's involved

Agriculture, Forestry, Fishing: Aratu Forests Ltd, Dairy NZ, Ernslaw One – Forestry, Landpower, Miraka, OSPRI New Zealand, Pāmu, PF Olsen, PGG Wrightson, Ruralco, T&G Global.

Construction: Cassidy Construction, Citycare – Construction, ECL Group, Fletcher Construction, Fulton Hogan, Naylor Love Construction, PAE (Construction), Taylors Contracting.

Defence, Public Order, Safety: The Department of Corrections.

Education and Training, Health Care and Social Assistance, Arts and Recreation: Metlifecare, Summerset Group.

Information Media and Communications, Finance and Insurance, Property Services, Business Services, Business Support Services, Public Administration: Accident Compensation Corporation, Christchurch City Council, Crestclean, Dairy NZ, Earthquake Commission, GNS Science, Kainga Ora, Plant and Food Research, Tonkin Taylor, UMS.

Manufacturing: Barkers, Cottonsoft, Dominion Salt, Fonterra, Freshpork NZ, Frucor Suntory, Hutec Engineering, Methanex New Zealand, NDA, Silver Fern Farms, Tenon.

Mining, Utilities, Waste Management: Chorus New Zealand, Counties Power, DELTA Utility Services, Genesis Energy, Horizon Energy Group, Meridian Energy, OMV NZ, Siemens, Transpower, Vector, WEL Networks, Wellington Water.

Other Services: AECOM, BECA, OCS, Worley Parsons.

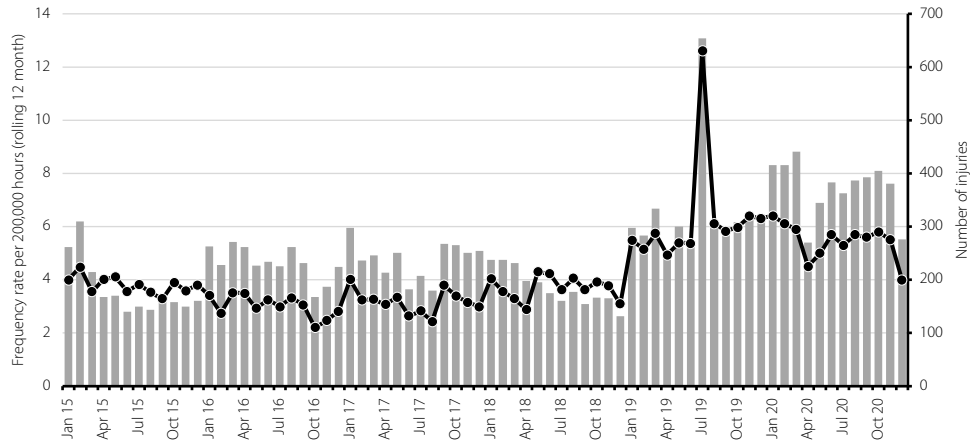
Retail Trade, Accommodation, Food Services: AsureQuality, SkyCity Entertainment Group, Z Energy.

Wholesale Trade, Transport, Postal, Warehousing: 1st Maintenance, Auckland Transport, BP Oil NZ, Centreport, CHEP NZ, Eastland Group, Liquigas, Lyttleton Port of Christchurch, Port Nelson, Napier Port, Port of Otago, Port Taranaki, Port of Tauranga, Wellington Airport.

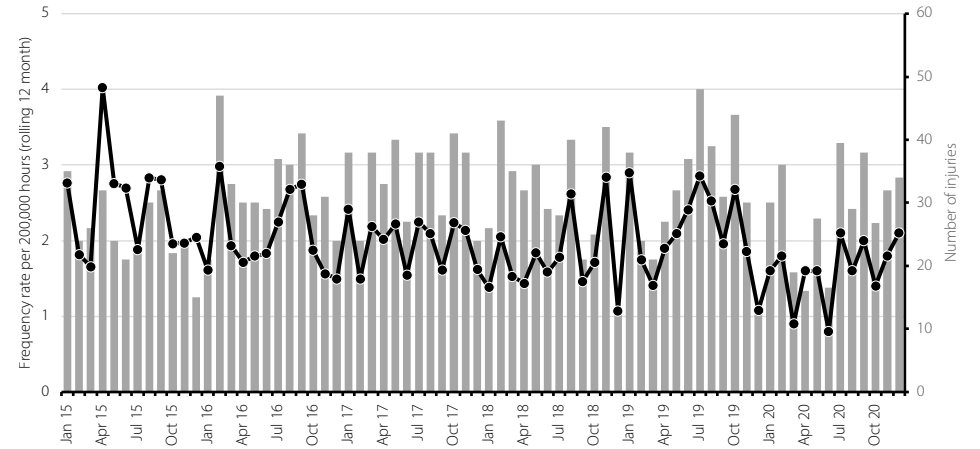
**Some members operate in more than one sector and entered data in more than one sector category to reflect the activities of different business units. As a result, those members are counted more than once in the table above.*

Key 5-year trends

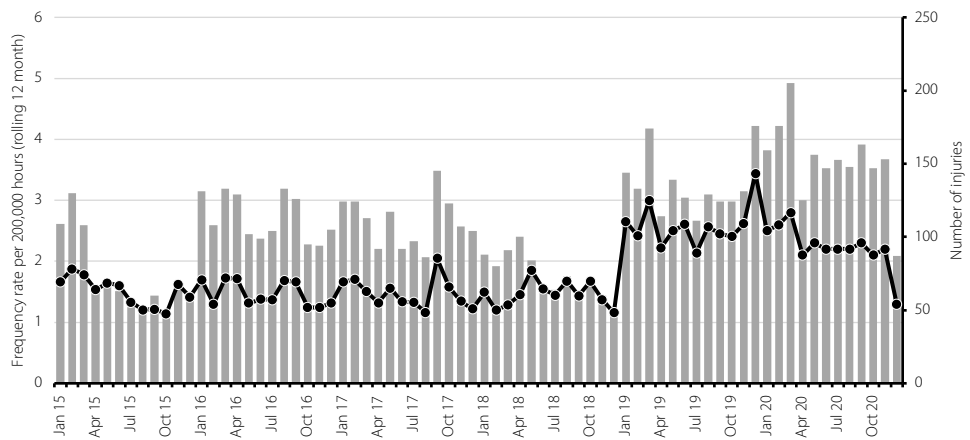
Total recordable injuries – Employees



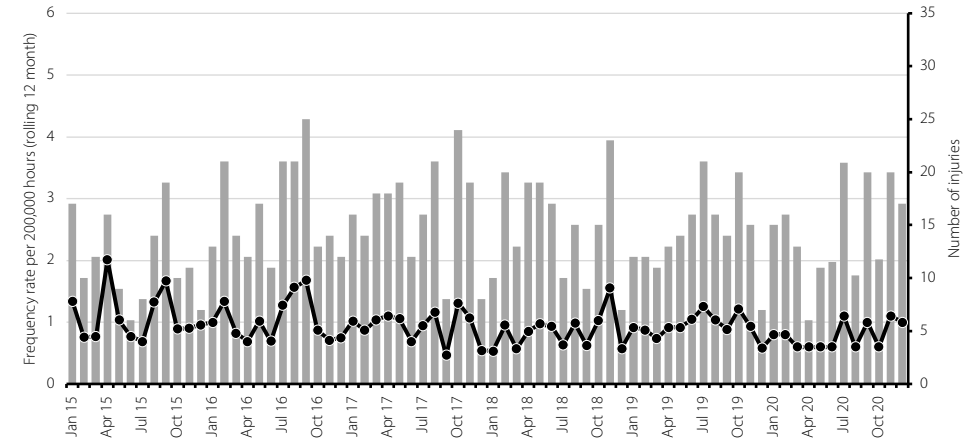
Total recordable injuries – Contractors



Lost time injuries – Employees



Lost time injuries – Contractors



■ Number of injuries —●— Frequency rate

Note the number of cases (grey bars) may increase while the frequency rate reduces, as the rate will depend on the number of hours worked over the rolling 12 month period.

ABOUT THIS REPORT

About the data

This report may not necessarily reflect the level of risk of serious or fatal harm within participating businesses.

All frequency rates are based on 200,000 hours worked.

The data in this report may be subject to errors relating to the way it is collected, classified and reported by member organisations and with collation of results. In particular, data quality is impacted due to the fact that some Forum members do not populate all measures or apply the OSHA definitions for reporting injury outcomes.

The Forum adopted a common injury reporting standard (OSHA) and injury classification standard (based on ANZSIC level 1) in December 2011 to improve the quality and reliability of benchmarking data.

Definitions

- **Restricted work injury:** Where an injury prevents a return to work on normal duties for 1 day/shift or more
- **Lost time injury:** Where an injury prevents a return to work for 1 day/shift or more
- **Medical treatment injury:** Any significant work-related injury or illness diagnosed by a physician or other licensed health care professional. Includes managing and caring for a patient to combat a disease or disorder.
- **Total recordable injury:** Total medical treatment injuries, restricted work injuries, lost time injuries and fatal injuries
- **First aid injury:** An injury requiring minor treatment
- **All injuries:** Total recordable injuries plus first aid injuries
- Frequency rates based on 200,000 hours worked



About the Business Leaders Health and Safety Forum

The Business Leaders' Health and Safety Forum inspires and supports its members to become more effective leaders on health and safety. The Forum has over 360 members, who are CEOs or Managing Directors of significant New Zealand companies, or companies operating in high risk environments.

Contact us

Email: benchmarking@forum.org.nz or find out more at: www.forum.org.nz